

REEL-BREAKDOWN

Jin You



|| Dora and the Lost City of Gold, 2019 – MILL FILM

LIGHTING AND RENDERING : BOOTS (MONKEY).
LIGHTING AND RENDERING : KATANA 3.x & RENDERMAN.



|| Alien : Covenant, 2017 – MPC

LIGHTING AND RENDERING : LANDER (SPACE SHIP) AND FIRE.
LIGHTING AND RENDERING : KATANA 3.x & RENDERMAN.



|| Alien : Covenant, 2017 – MPC

LIGHTING AND RENDERING : LIFTER (SPACE SHIP), ENVIRONMENT, AND FXs.
LIGHTING AND RENDERING : KATANA 3.x & RENDERMAN.



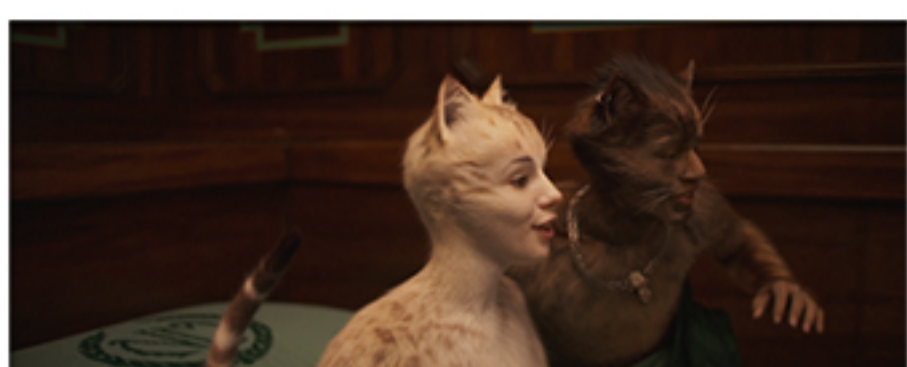
|| The Mummy, 2017 – MPC

LIGHTING AND RENDERING : MUMMY.
LIGHTING AND RENDERING : KATANA 3.x & RENDERMAN.



|| Cats, 2019 – MILL FILM

LIGHTING AND RENDERING : CATS (CHARACTERS).
LIGHTING AND RENDERING : KATANA 3.x & RENDERMAN.



|| Cats, 2019 – MILL FILM

LIGHTING AND RENDERING : CATS (CHARACTERS).
LIGHTING AND RENDERING : KATANA 3.x & RENDERMAN.



|| Pacific Rim : Uprising, 2018 – DOUBLE NEGATIVE

LIGHTING AND RENDERING : JAGER (ROBOT), ENVIRONMENT, AND FXs.
LIGHTING AND RENDERING : CLARISSE.



|| Alien : Covenant, 2017 – MPC

LIGHTING AND RENDERING : SNOW (FXs) AND CHAINS.
LIGHTING AND RENDERING : KATANA 3.x & RENDERMAN.



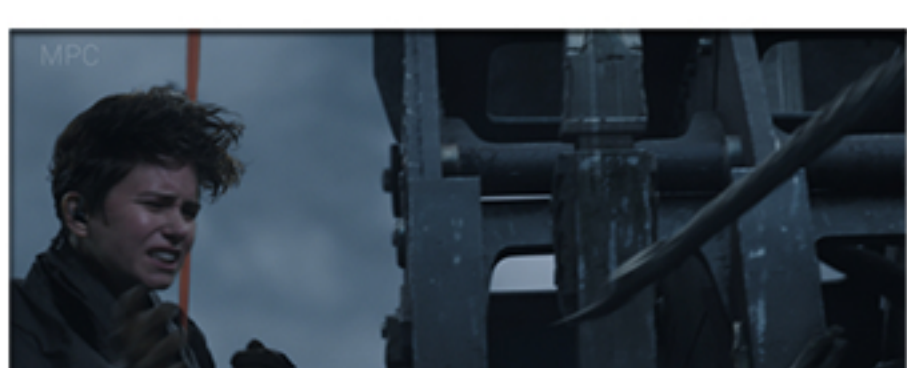
|| Alien : Covenant, 2017 – MPC

LIGHTING AND RENDERING : SNOW (FXs).
LIGHTING AND RENDERING : KATANA 3.x & RENDERMAN.



|| Alien : Covenant, 2017 – MPC

LIGHTING AND RENDERING : CRANE (LIFTER), ENVIRONMENT, AND FXs.
LIGHTING AND RENDERING : KATANA 3.x & RENDERMAN.



|| Alien : Covenant, 2017 – MPC

LIGHTING AND RENDERING : ALIEN, CRANE (LIFTER), AND FXs.
LIGHTING AND RENDERING : KATANA 3.x & RENDERMAN.



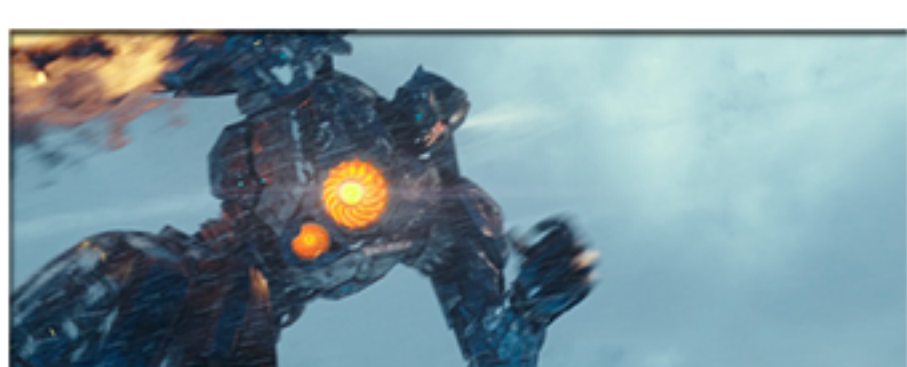
|| The Mummy, 2017 – MPC

LIGHTING AND RENDERING : MUMMY.
LIGHTING AND RENDERING : KATANA 3.x & RENDERMAN.



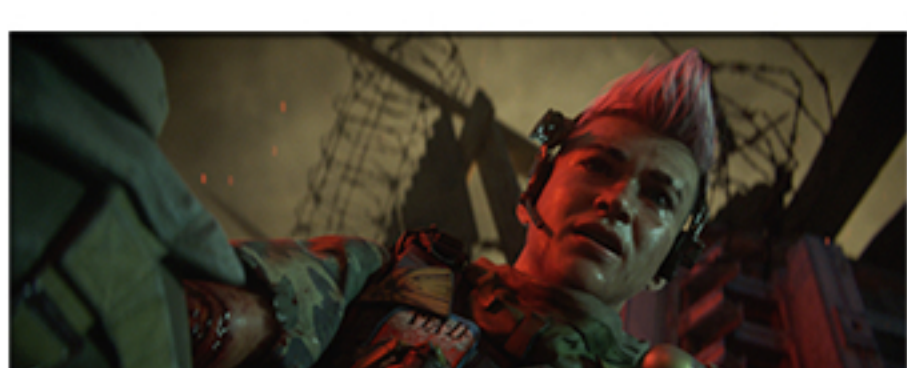
|| Pacific Rim : Uprising, 2018 – DOUBLE NEGATIVE

LIGHTING AND RENDERING : JAGER (ROBOT), ENVIRONMENT, AND FXs.
LIGHTING AND RENDERING : CLARISSE.



|| Pacific Rim : Uprising, 2018 – DOUBLE NEGATIVE

LIGHTING AND RENDERING : JAGERS (ROBOTS), ENVIRONMENT, AND FXs.
LIGHTING AND RENDERING : CLARISSE.



|| Call of Duty : Black Ops 4, 2018 (Cinematic) – DIGIC PICTURES

LIGHTING AND COMPOSITING : CHARACTER, ENVIRONMENT, AND FXs.
LIGHTING AND COMPOSITING : MAYA 2017, ARNOLD, & NUKE 11.x.



|| Call of Duty : Black Ops 4, 2018 (Cinematic) – DIGIC PICTURES

LIGHTING AND COMPOSITING : CHARACTERS, ENVIRONMENT, AND FXs.
LIGHTING AND COMPOSITING : MAYA 2017, ARNOLD, & NUKE 11.x.



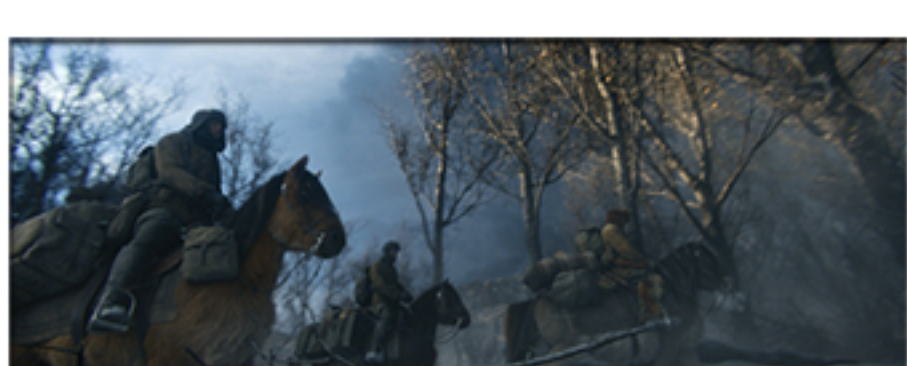
|| Call of Duty : Nazi Zombies, 2018 (Cinematic) – DIGIC PICTURES

LIGHTING AND COMPOSITING : CHARACTERS, ENVIRONMENT, AND FXs.
LIGHTING AND COMPOSITING : MAYA 2017, ARNOLD, & NUKE 11.x.



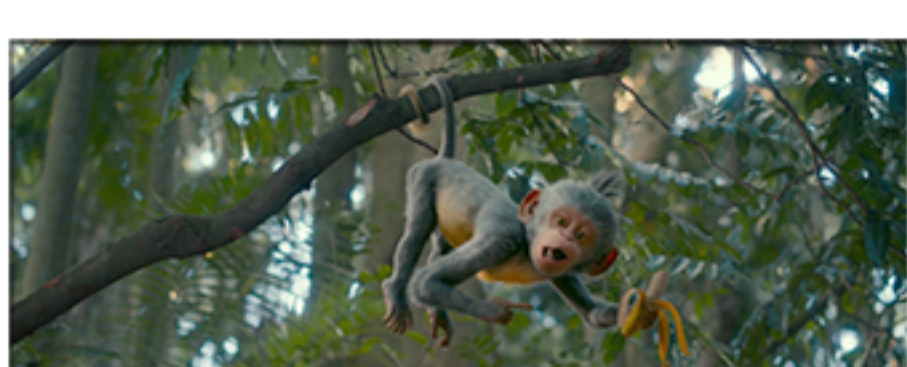
|| Call of Duty : Nazi Zombies, 2018 (Cinematic) – DIGIC PICTURES

LIGHTING AND COMPOSITING : CHARACTERS, ENVIRONMENT, AND FXs.
LIGHTING AND COMPOSITING : MAYA 2017, ARNOLD, & NUKE 11.x.



|| Love, Death, and Robots, 2019 (Netflix) – DIGIC PICTURES

COMPOSITING : CHARACTERS, ENVIRONMENT, AND FXs.
COMPOSITING : NUKE 11.x.



|| Dora and the Lost City of Gold, 2019 – MILL FILM

LIGHTING AND RENDERING : BOOTS (MONKEY) AND BANANA.
LIGHTING AND RENDERING : KATANA 3.x & RENDERMAN.